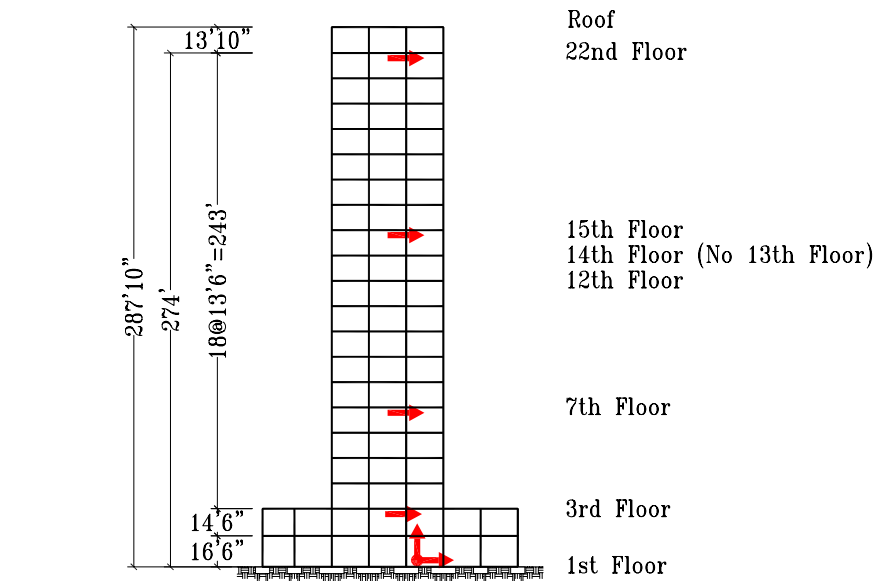
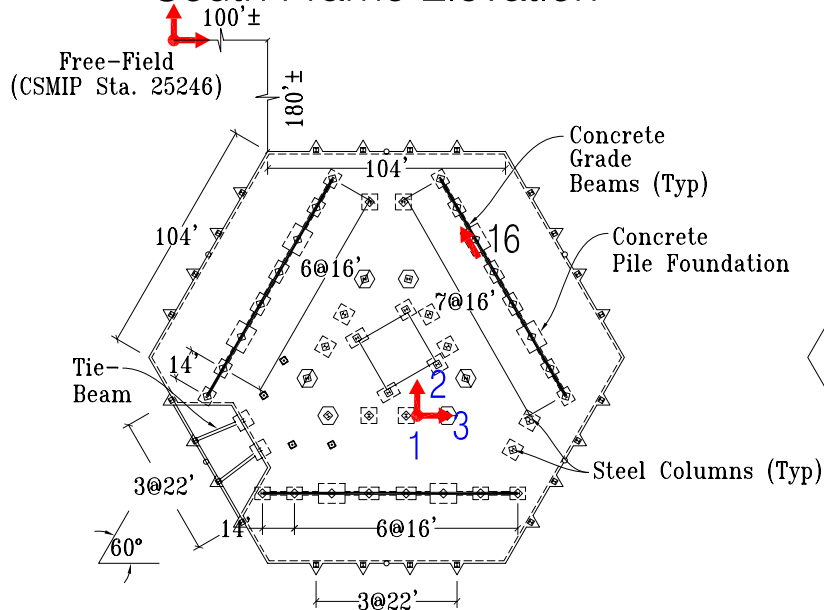


Oxnard - 21-story Office Building (CSMIP Station No. 25245)

SENSOR LOCATIONS



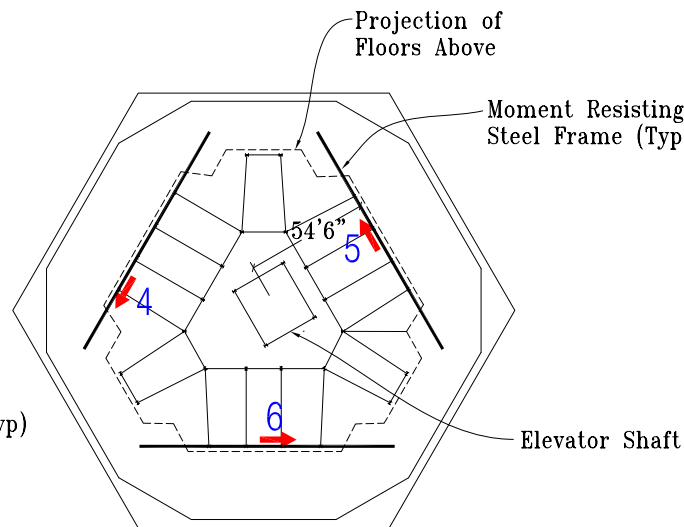
South Frame Elevation



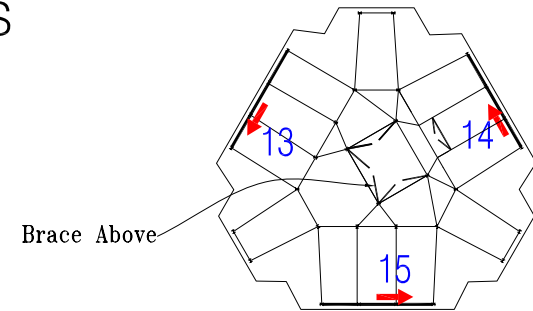
1st Floor Plan

N, N_{ref}

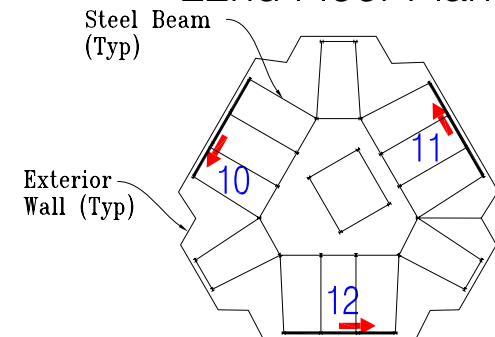
Structure Reference
Orientation: $N_{ref} = 360^\circ$



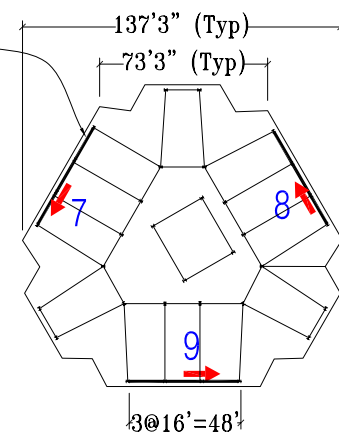
3rd Floor Plan



22nd Floor Plan



15th Floor Plan



7th Floor Plan

Installed: 9/21/2004
Diagram: 1/10/2013 rev.